



Starlight Express

Starlight Quilters Guild

www.starlightquilters.com

September 2010

Presidents Message

By Connie Flagler

First I would like to thank all who participated in the group project making placemats for "Meals on Wheels." We had a great turnout and are going to continue with it to supply more placemats for other "Meals on Wheels" programs throughout the area. Great job. Rosie has asked for donations of yarn for the Christmas Bu-



reau. They are making afghans for the elderly, baby caps and blankets etc. Please look through your stash and if you have yarn bring it to the next meeting.

Don't forget the September meeting is the "Sewing Bee". Bring your machines and projects and work on personal things or make some small projects for the Quilt Show Boutique. We have extension cords but you might throw in your own just in case.

We are still selling tickets for the two beautiful Opportunity Quilts and the Quilt Chest (Treasure Chest). Maybe one of these things would make a nice gift if you win and don't particularly need it. We were very fortunate this year to have two quilts and the Chest is really nice.

Be thinking about what you need to finish for Christmas gifts and check out the beautiful new Christmas fabrics at our local quilt shops. They have all been very generous this year with the donations of some of the gift certificates for our door prizes. Carol at Prairie Point has also helped out so much by donating our backing fabric for one of the Opportunity Quilts. The batting and quilting was also donated and Renee Arnett donated the quilt top fabric. All of the money for the tickets sold go straight into the fund that pays for our wonderful speakers.

I am looking forward to the Retreat the "The Barn" again this year and hope to see a lot of you there.

Fat Quarter Drawing-

Remember to bring you fat quarter for the July drawing. The fat quarter for the month of September is "Back to School"



September Program- Quilting Bee and Quilted Postcard Workshop

Donna DiNalala

The September meeting will follow in the tradition of the past few years of being an opportunity to finish up quilts and other projects for the quilt show -- with the added bonus of presenting a Quilted



Postcard Workshop during the regular meeting time. Deb Rowden will return to show us her ideas for making postcards from fabric scraps, leftover blocks, strips, strings and embellishments. These postcards can actually travel through the mail and are a wonderful way to communicate with friends around the world. Everything will be provided to make two 4" x 6" postcards: double-sided fusible base and fabric. All you have to provide is a bit of imagination and creativity. If you want to quilt your cards you may bring your sewing machine to class or take your postcards home to sew. If you haven't signed up and still want to take the workshop, email me at dinatale@att.net no later than September 22 (so we can be sure to have enough materials). The \$5 registration fee will be due at the beginning of the workshop. And remember, for everyone postcard you donate to the Boutique you will receive \$1 in Boutique Bucks to be spent at the quilt show.

2011 Programs and Workshops

Donna DiNatale

2011 is shaping up nicely. The Programs and Workshops Selection Committee met recently to vote on programs for next year and members are now working to seek out and/or develop the selected programs. Here are just a few of the programs you can look forward to in 2011: Amy Bradley, Linda Mooney, Tony Munroz, Designs By Diane, Edie McGinnis and Angela Walters (official quilter of Tula Pink). Look for an update in next month's newsletter.

Library News-

By Sandy Fey & Cheryl Tomson

Author of the Month Eleanor Burns

One of the best known quilt teachers and authors is Quilt in a Day creator Eleanor Burns. Short cuts she created for the classes of busy mothers and working women she taught in the 70's continue to attract us today. Her long-running Quilt in a Day television series and numerous books inspire us. Our library has a number of Eleanor's books, from the 5th edition of her original 1978 "Quilt in a Day Log Cabin Pattern", through "Double Pinwheel Quilts", "Sunbonnet Sue Visits", "Still Stripping", "Orion's Star", and her latest "Day and Night Quilt" which produces two wall hangings from the scraps of the main quilt.

We want to thank all of you who have so generously donated books to our library. We plan to begin listing the new additions and who has donated them. This month we received "501 Quilt Blocks" by Better Homes and Gardens from Linda Clatterbuck and "Ladies Day Out with the Bonnet Girls" by Helen R. Scott from Jeannie Poore.



2010 Starlight Guild Challenge

—Mary Funk

The guild challenge for 2010 was a great success. 150+ placemats were turned in. The placemats will be presented to the Meals on Wheels representative at the September guild meeting. Just because the challenge is over please continue to make placemats. They will be shared with other local Meals on Wheels programs in Johnson County.

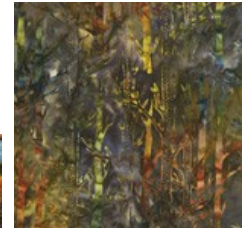
...And the winners are-

- Workmanship— Jeannie Zuck
- Most fabrics used— Marcia Lictenaur
- Most creative— Deb McCurnin
- Most made— Rosie Brinker -103

Charm Square Project-

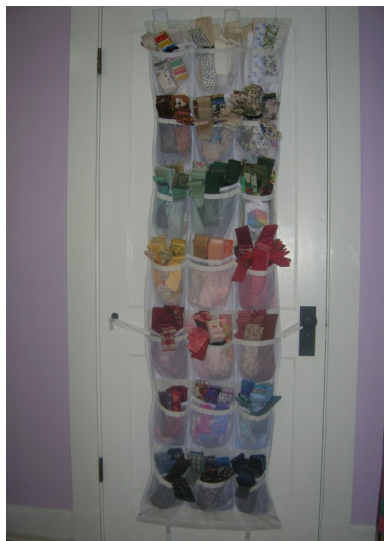
By Kristi Orr

Remember to bring your Fall Charm Squares to the September SQG meeting. You will need 50 Charm Squares(1 yard of fabric should give you enough fabric for the # of charm squares needed). Put your squares in a baggy with your name and a piece of the selvage with the manufacturer listed on it.



Fabric Organization Ideas-

Photos Submitted by Fran Garrett



YOU ARE INVITED

WHAT: STARLIGHT QUILTER'S GUILD ANNUAL QUILT SHOW

WHEN: OCTOBER 9TH AND 10TH

WHERE: BISHOP MIEGE HIGH SCHOOL

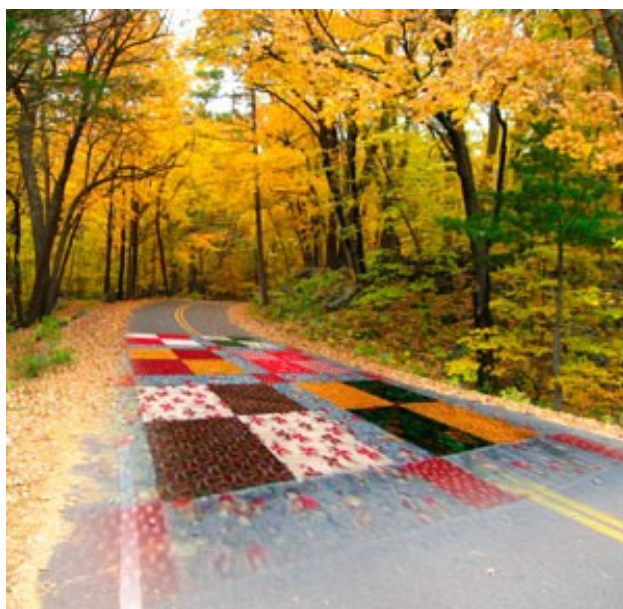
50TH STREET AND MISSION ROAD

FAIRWAY, KS

TIME: 9:00 AM TO 4:00 PM NO ENTRANCE FEE

The space is open and well lit for viewing of fabulous quilts that are competing for your vote to win a special ribbon. The boutique is full of quilting bargains. The bake sale will fulfill your sweet tooth. See the variety of Vendors on site. Displays by various groups and committee's of the guild will give you new options for sharing your quilting passion. Last chance to enter your winning ticket to win one of the great opportunity quilts this year.

This Day is For You!



Reminder's:

September Guild meeting...

Bring your completed entry form for your quilt/quilts you will be entering for the show. (Forms will be available at the quilt show table at the meeting.)

Sign up to help work the show...many opportunities

Bring items you will donate for boutique

Let show committee know about your display

Pick up flyers to display wherever you work and play

Set up arrangements with co-guild members to go to show.

October 8th, 4:00 PM...

Deliver your competition quilts to Bishop Miege School

Deliver your bake sale donations

Deliver Antique quilts you would like to share for viewing

Deliver displays from your group or committee

Help setup and get a preview of boutique items

October 9th and 10th, 9:00 am to 4:00 pm...

Attend the show and bring all your family and friends

Work and volunteered time and bond with your fellow quilters

October 10th, 4:00 pm

School House Workshop is a Big Hit

Donna DiNatale

The School House Workshop held on August 28th was a big hit with everyone involved. Students and teachers alike all came away with new knowledge and techniques for layering, quilting and binding. Many of the "students" participated in the open sew in the afternoon to practice their new skills and obtain one-on-one assistance from some of the instructors. The students were a good mix of beginning and intermediate quilters, proving that one can always learn something new about quilting. We also discovered tools to make the various tasks faster and easier. So a big thank you to instructors Mary Honas, Shirley Lewis, Rosie Brinker, Bernadine Farrow, Jackie Stoaks and Susan Jarsulic. We can't wait to show off our quilts made by hand from start to finish!



Do you have a Birthday This Month

Well, Happy Birthday! Please bring a snack or dessert for the Hospitality Table to share. Fellow SQG members will be deliriously happy to share your goodies! No doubt someone will beg for your recipe. This month's

birthdays are:
Janine Borland
Becky Edson
Donna Holloway
Shirley Lewis
Barbara McMahon
Jamie Morgan
Carol Nash
Linda Ochs
Connie Passaro
Sue Sharpe
Kaye White
Lynne Zeh



School House Workshop Thank you!

The recent School House work shop put on by our Guild members was just fantastic. The instructors were so patient, answered many questions, taught us techniques that were basic and so useful, encouraged each of us students to know we do have the skills needed to complete our projects, showed us tricks/gadgets of the trade and admitted that a quilter's every stitch does not have to be perfect. The secret is practice, practice, practice. Thank you to all the ladies who gave of their time and talents...can't wait until another similar work shop is offered. We'll be there.....Cheryl and Jan thank you,

What is one of the best things about fall? The return of school days. The school house workshop offered by the guild had all the best of school. Great teachers, new tools, interesting topics, and great tips to take away to make your next project easier were all part of the Saturday morning workshop.

Thank you to the program planners and all the instructors that gave time to share their knowledge. It was a fun morning.

Sincerely,
a student

Project Linus-

Hugs Karen and Mary

First of all thank you so much for the donations to buy Velcro for the Lily's Hugs blankets - we have such generous members. We were able to get 7 1/2 rolls and kits are being made. Remember these quick to make (about 2 hours) blankets count toward our total and get you a drawing ticket for every one after you have made your three. As of our last meeting we have collected 269 blankets --- THANKS once again and keep up the good work.



Guild Roster

Marilyn Carr

To make our Guild's roster really stand out, we need pictures of all members.

Please see me during the September meeting and I'll take a quick shot of you.

Pictures are missing on the below list of people:

- | | |
|-------------------|--------------------|
| Diana Bean | Patty Kroll |
| Toni Caro | Marcia Lichtenauer |
| Jean Liggett | Carmen Carter |
| Kathy Limpic | Kathy Caswell |
| Sheila Lynch | Debbie CREDIT |
| Mary Maxwell | Becky Edson |
| Amy McCarthy | Linda Eustace |
| Barbara McCartney | Diane Feltman |
| Nikki McDonald | Stephanie Frey |
| Janice Meloan | Jan Galvan-Colson |
| Pat Monaghan | Nancy Nunn |
| Marilyn Gussman | Donna Holloway |

Guild Roster (cont'd)

- | | |
|-----------------|-----------------|
| Sue Pimpl | Ellen Walbridge |
| Paula Quade | Susan Williams |
| Debbie Tate | Pat Wineland |
| Sandy Teeple | Beverly Zavadil |
| Karen Vertin | |
| Sharon Vickery | |
| Becky Wackerman | |

Quilt display case-

By Lisa Souza and Cheryl Diebold



Don't forget to purchase your chance to win the quilt chest that you've seen at our guild meetings. The tickets are \$1.00 each or 6 for \$5.00. Not only do you get the chest, but all the goodies that have been donated inside of it. (We continue to accept donated quilt related items to put in the chest). The drawing will be at the November meeting. Thanks for helping the guild raise money for all the great speakers we have!!

Quilters Wisdom:

Real women don't have hot flashes, they just have power surges.

Last Perry Sew Day for 2010

Jamie Morgan

Come join us for a day of fun, food, quilting and camaraderie as we usher out the 2010 year of sew days at Perry. The last sew day for 2010 at the Perry, Kansas American Legion will be held October 2nd from 10am to 10pm. This is the perfect opportunity to finish up holiday gifts, seasonal decorations and quilts, and let's not forget those pesky UFO's you don't want to carry over into 2011. For your convenience we will have cutting and ironing stations available. For those who haven't joined us before this is not just for quilters. Past participants, not working on quilts, have worked on embroidery, crochet, knitting, wool appliqué, and rug hooking projects.

Lunch and dinner will be pot luck. Cost for a day of sewing remains at \$10 per person. All paper products are provided. Monies collected go to support the Perry American Legion Post.

If you have any question or wish to reserve your spot contact Jamie Morgan (code43top@yahoo.com) or Janette Luehring (jluehring@kc.rr.com). Hope to see you there!

Did You Know - The American Legion Post at Perry, Kansas makes and distributes quilts to the Topeka VA Hospital and to wounded veterans returning to their homes.

Opportunity Quilts-

Opportunity Quilt tickets are available at each meeting. Ruth Bonin has tickets for you to purchase for yourself or take several to work with you and sell them to you co-workers. Tickets are \$1.00 each or 6 tickets for \$5.00.



August Attendance

By Marilyn Carr

Welcome New Members:

Robin Pate

August Attendance

Members Present 87

New Members 1

Guest 7

MEETING ETIQUETTE

- Turn off your cell phones
- Keep conversations quiet
- If you have show and tell, please keep it at your seat until the end of the meeting so as not to offend the featured speaker
- Try not to get up and visit the food tables during the presentation

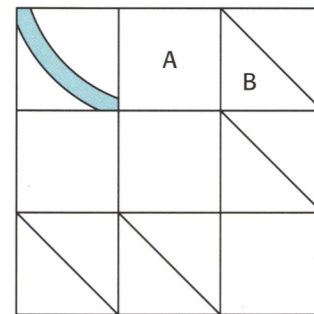
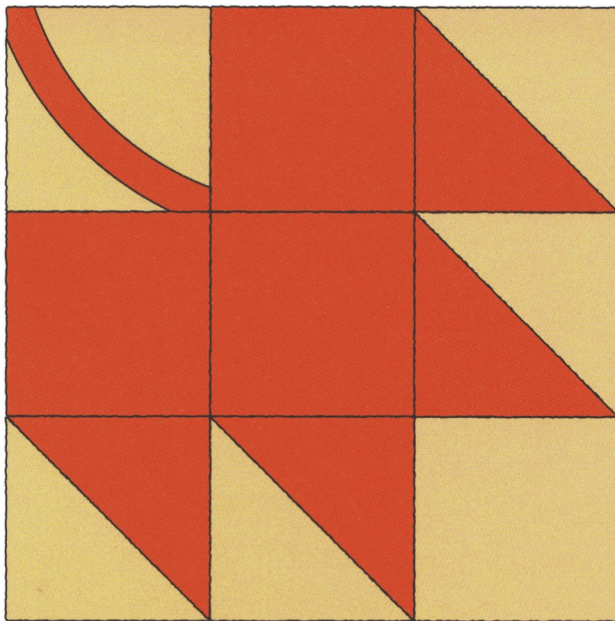
Thanks

September Block of the Month

Autumn Leaf

Also known as Maple Leaf

This month's pattern was both easy and difficult to choose. Easy, because I knew I wanted a fall leaf pattern and have always liked this particular one. Difficult, because it has been published under so many different names: Autumn Leaf; Maple Leaf; Magnolia Leaf and more. The earliest documented record I have of this pattern is when it was published in The Kansas City Star in 1930. Carrie Hall and Rose Kretsinger published it under both Maple Leaf and Autumn leaf in their book *The Romance of the Patchwork Quilt in American* (1935). Both of these publications show the pattern as a large block containing four leaf blocks with a narrow sashing between the blocks and a contrasting color square patch in the center. The block pattern given here has a curved stem that is appliquéd on. You may wish to piece or appliqué a straight stem instead. This pattern is for a 9" block so putting four of these together with sashing would make a 20" finished block. Large enough to make a wall quilt or lap quilt using only four of the compound blocks. Try this block using those beautiful Fall colors of rust, gold, and deep red.



A \square $3\frac{1}{2}$ " B \triangle $3\frac{7}{8}$ "

2010 Events Calendar

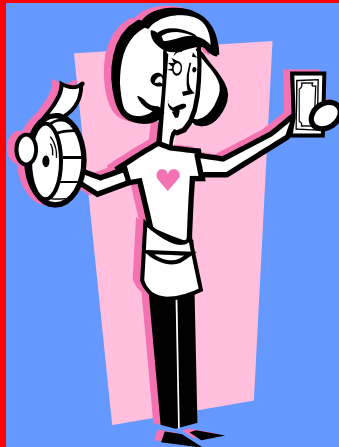
September 28---
Quilting Bee and
Quilted Postcard
Workshop

September 17-19---
SQG Retreat, The
Barn

October 9 & 10-- SQG
Quilt Show-" Every-
thing Old is New
Again"

October 26---**Kathy
Delaney**, It I'm the Appliqué Queen, Where is My
Crown?

November 16---**Caroline Searles**, Closets, Shelves,
Trunks, and Under the Bed



Advertisements

FREE! Post your AD HERE! If you are a guild member in good standing and would like to run your **FREE** ad, send your information to the newsletter editor. See back page for details.

Pieces in Plaid Quilting by Lynne Zeh. A professional full service quilter for 6 years. Located in Lenexa, KS.

Machine Quilting. Let's make your quilt special! Machine quilting; traditional or contemporary, simple or custom. Peggy Skaith 913-341-0525 or Especially-Quilts@att.net

Machine Quilting by Julia Day. Is your piecing ready to transform? Call for your consultation today.

Communications-

Let us know of any concerns, deaths, triumphs, or if someone needs help with something. This way we know what is going on with our fellow members and can send cards, etc. Contact one of these members:

- Rosie Brinker---913-268-8819 or rosie474@aol.com
- Shirley Lewis---913-722-5486 or sll849@aol.com
- Barbara DeMack---913-485-3966 or barb-stoys4u@hotmail.com



Blog-

For those of you who are interested in quilts, especially old quilts, Donna DiNatale has started a new blog that will talk about some of her quilts. She will include information about collecting and caring for quilts, old and new. She'd love to have you follow along and provide comments. Here is the link: <http://heartlandquilts.blogspot.com/>



Starlight E-site—the Yahoo Group

---Lea Robrahn
Starlight E-Site is an online club where Starlight members get together to share photos, links, documents or files, and have a message board to post items of interest.

It sounds more complicated than it is. You can elect to read all information on the E-Site, which leaves your inbox less cluttered.

To join:

1. Send an email message to Lea Robrahn (remove spaces) leannieq@hotmail.com
2. You'll than be sent an invitation from Starlight E-Site
3. Join.

"FIND US ON FACEBOOK" <http://www.facebook.com/group.php?gid=106359079270>

Looking for Suzy Scissorhands

Donna DiNatale

Next year I would like to start a monthly feature at our guild meetings that introduces members to one gadget or tool or piece of equipment that makes life as a quilter easier and/or better. This can be anything from a needle threader to a sewing machine and everything in between. If you have a favorite thingamabob or whatchamacallit that you would like to share, or something you've seen or read about that you would like to know how to use, please send an



Membership Information:

2010 Membership, New or Renewal, \$25.00. Your annual dues bring the newsletter chocked full of information and

news of upcoming events to your e-mail or home; provide a lending library of quilting books available to members; and other benefits too numerous to mention!

Meeting Date and Time:

Monthly guild meetings are held 6:30-9:00 PM every 4th Tuesday, January-October at **Countryside Christian Church, 6101 Nall, Mission, KS**. The November meeting date is determined each year based on the Thanksgiving holiday. There is no December meeting.



Changes: If you have moved, changed your name, e-mail address or telephone numbers (home, work, or cell), please bring them with you to the next guild meeting or mail them to Starlight Quilters Guild, PO Box 9362, Shawnee Mission, KS 66201

Newsletter Deadline:

Articles are due the 5th of the month. E-mail your article to Margaret Welch at mwelch5@kc.rr.com (913-432-4515) .



Meeting Cancellation:

SQG meetings will be canceled if the Shawnee Mission School District cancels classes. Monitor announcements on TV and radio when bad weather threatens.

NEXT SQG MEETING!

Tuesday, September 28, 2010 6:30 PM—Meet friends, gobble some goodies, bring some boutique items or tickets, sign up to volunteer!

7:00 PM— **Quilting Bee and Quilted Postcard Workshop**



Remember to bring:

- Nametag
- Show and Tell
- Library Books
- Goodies (if it is your Birthday)
- Fat Quarter (see list)
-

Starlight Quilters Guild
P.O. Box 9362
Shawnee Mission, KS 66201-2062
www.starlightquilters.com